

**Jan 2024
Newsletter**



BOARD MEMBERS

Kathleen Johnston - **President**
Lillie Garrido Butcher - **Vice President**
Daniel Kennedy - **Treasurer**
Melissa Urofsky - **Secretary**
Jauna DuPratt - **Trustee / ACC Liaison**



UPCOMING MEETINGS

Wednesdays at 6pm

Meeting Link: [Click here](#)

WED. JAN 10TH • 6PM • BOARD MEETING

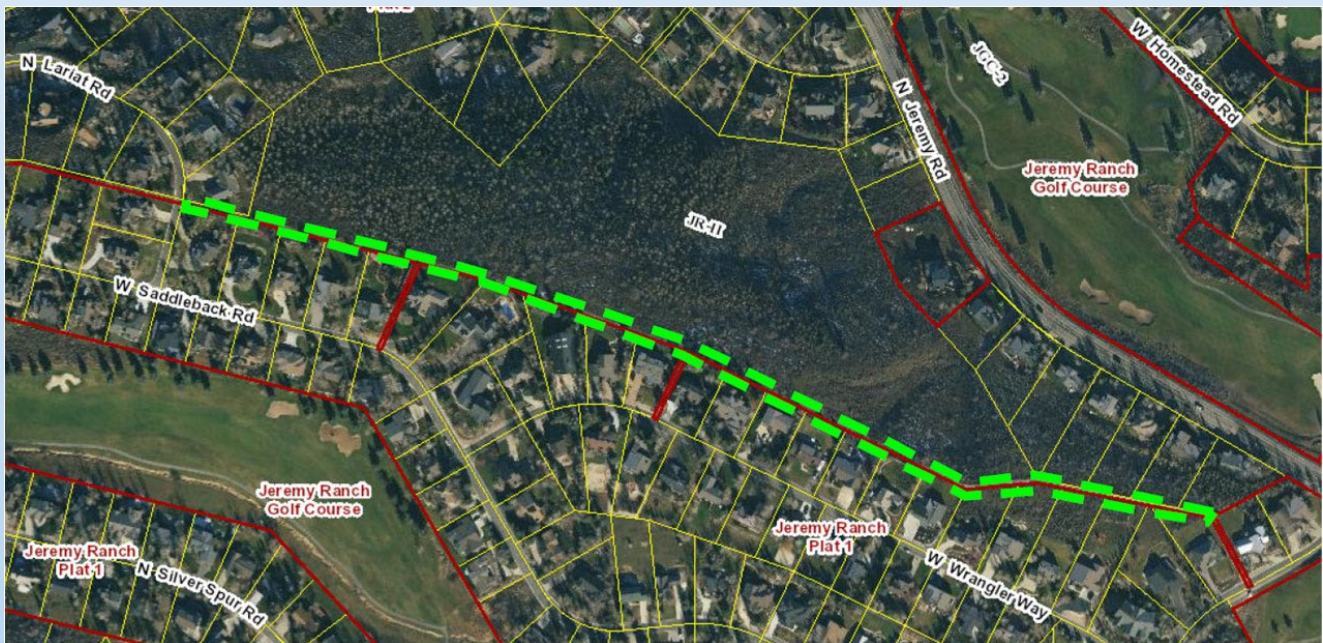
WED MAR 13TH • 6PM • BOARD MEETING

THU MAR 21ST • 5:30PM-7:30PM • ANNUAL MEETING OF MEMBERS

WED APR 10TH • 6PM • BOARD MEETING

Or request the Zoom link by emailing: jeremyranch@hoaliving.com

SUMMER 2024 ISLAND TRAIL REPAVING PROJECT



Jeremy Ranch has worked for several years to identify and plan for maintenance on the Island Trail. The Island Trail is a popular paved walking path on the Jeremy Ranch Parcel 1 open space. It is one of the largest maintained assets of the community and is identified in the Association's Reserve Study for replacement.

A survey has been conducted to identify any obstructions that may need to be removed before work can begin. The survey report indicates that there are no fences or utility boxes that must be moved. However, a few trees on the Jeremy Ranch Property must be trimmed back for equipment clearance.

Joseph Trevithick, the Association manager, will contact the owners of properties that line the trail to discuss any specific concerns they may have. The Association's priority is to reduce the impact of the project while providing an excellent outdoor recreation opportunity for the community for many years in the future.

The Association aims to complete this work by early summer 2024. Stay tuned for updates.

ACC BOARD POSITION OPEN

We Need Your Help!

We are excited to announce that there is an open position on the Architectural Control Committee (ACC) board. We need your help in filling the fifth position to serve our community. As a member of the ACC, you will have a positive impact on the appearance and quality of our neighborhood. You will play an important role in ensuring that all construction complies with the Protective Covenants and the Design Guide.

The ACC holds meetings via Zoom on the first Tuesday of every month at 6:30 PM. During these meetings, ACC applications will be reviewed and ruled upon.

Our primary objective is to maintain a beautiful, safe, and harmonious community by reviewing mandatory applications for construction, remodeling, additions, landscaping, and maintenance on lots and homes within our Subdivision.

Our ultimate goal is to create and maintain Jeremy Ranch as a quality community in which to invest and reside. It is our intention to ensure an environmentally sound and aesthetically pleasing development for the mutual benefit and enjoyment of all Association Members.

If you are interested in this opportunity, please submit your interest to our HOA Manager, Joseph Trevithick, at: jeremyranch@hoaliving.com.

We appreciate your consideration and look forward to hearing back from you. Thank you for your willingness to help and we hope you will join our team!

AND SPEAKING OF ACC GUIDELINES AND CC&Rs ...

Before planning any exterior repair, renovation or addition, it is essential to review our ACC guidelines and CC&Rs to ensure that your project complies with JRHOA regulations. These documents provide answers to most of your questions and concerns. Please note that any exterior repairs, renovations, or additions must be submitted for review and approved by the ACC before starting any work. Although we understand that unexpected damages can be stressful to repair, it is important to follow the guidelines to maintain the safety, fairness and aesthetic appeal of the community. For more information and access to all relevant documents, please refer to the JRHOA website.

- Architecture, Use & Conduct Standards
- Alterations & Remodel Application
- CC&Rs

may be found at: www.jrhoa.com/hoa-docs/



FRIENDLY REMINDER



Parking is not allowed on our streets from **Nov. 15 – Apr 15** during snow season allowing for snowplow access.



FIRE HYDRANT SAFETY REMINDERS

Under Summit Water's policy, the individual lot owners are responsible for ensuring that the hydrants serving their properties are clear of snow and easily accessible in the case of fire or other emergency.

Each property owner that is adjacent to or across the street from a fire hydrant is responsible for making sure the snow is cleared from the hydrant. The Summit County Ordinance requires that snow be removed from an area of three feet surrounding the base of the hydrant.

Please remember that there is no parking in front of fire hydrants.

Summit Water's policy requires that markers be present at each hydrant location. If the homeowners see that the flagged markers are damaged or missing, contact Summit Water's offices for a replacement marker.

THANK YOU FOR KEEPING OUR COMMUNITY SAFE!



ANNUAL FIRE INSPECTIONS REQUIRED FOR NIGHTLY VACATION RENTALS

If you wish to rent your home, please be sure it is inspected for safety. Annual fire inspections are necessary for the safety of your guests and are required by Utah state and Summit County laws.

Fire extinguishers, smoke alarms, carbon monoxide alarms and premise identification signs are required and will be inspected. Fire sprinkler system (if installed) and electrical panel will also be inspected.

The inspection should take between 30 – 60 minutes depending upon the size of the home.

For more information, please click on this link:

www.pcfcd.org/fire-prevention/nightly-rentals/

SUMMIT COUNTY CURBSIDE YARD WASTE PROGRAM

Summit County is launching an optional pilot curbside yard waste program in select locations including Jeremy Ranch, in Spring 2024 run by Republic Services. To successfully launch the program, 3500 residences need to opt into the program. If the minimum number of sign ups are received, participating residents will receive 95-gallon yard waste carts in which they can place residential yard waste.

The cost of service will be an annual fee of \$125 for collection from April 1 to October 31 2024. Participants will also be billed an additional \$85 start up and cart delivery fee.

Residents can sign up for the program by visiting:

www.bit.ly/scyardwasteform

NOTE: Sign-ups will be treated as a commitment.

For more information, please click on this link:

www.summitcounty.org/2361/Summit-County-Curbside-Yard-Waste-Progra

SAVE THE DATE!
ANNUAL MEETING • THURSDAY MARCH 22ND
IN PERSON • 5:30-7:30PM

Jeremy Ranch Golf and Country Club Sled Reminder

Sledding comes with some risks. The country club has asked that sledding not take place on the golf course due to the elevated risk of a sled hitting an obstacle causing injuries. Please request that children stay safe when playing outside and not sure the gold course to sled down.

This page is dedicated to Emergency Preparedness tips and volunteer opportunities for our Jeremy Ranch community.

SUMMIT COUNTY EMERGENCY ALERTS

This system dispenses critical emergency information quickly such as unexpected road closures, missing persons, special event impacts and evacuations of buildings or neighborhoods. Time-sensitive messages will be delivered wherever you specify, such as your home, mobile or business phones, email address and text messages.

Sign up for alerts here:

www.member.everbridge.net/index/453003085613422#/signup

SUMMIT COUNTY READY! Welcome to the Preparedness Library

To prepare our communities for disasters, Summit County has accumulated over a dozen easy to read pamphlets that covers wildfire preparedness, emergency communication plans, how to build disaster supply kits, and safeguarding critical documents to name a few.

Take a look at: www.summitready.org/summit-ready

SUMMIT COUNTY VOLUNTEER OPPORTUNITIES

SUMMIT RESPONDS: In a major disaster, First Responders cannot be everywhere to help the community. Summit Responds helps Summit County Emergency Management in supporting the needs of the community by using volunteers to assist in the goals of response and recovery.

Click here for more information: <https://summitready.org/summit-responds>

CERT: The Community Emergency Response Team (CERT) program educates volunteers about disaster preparedness for the hazards that may impact their area and trains them in basic disaster response skills, such as fire safety, light search and rescue, team organization, and basic first aid. CERT offers a consistent, nationwide approach to volunteer training and organization that professional responders can rely on during disaster situations, allowing them to focus on more complex tasks.

Click here for more information: <https://summitready.org/cert>